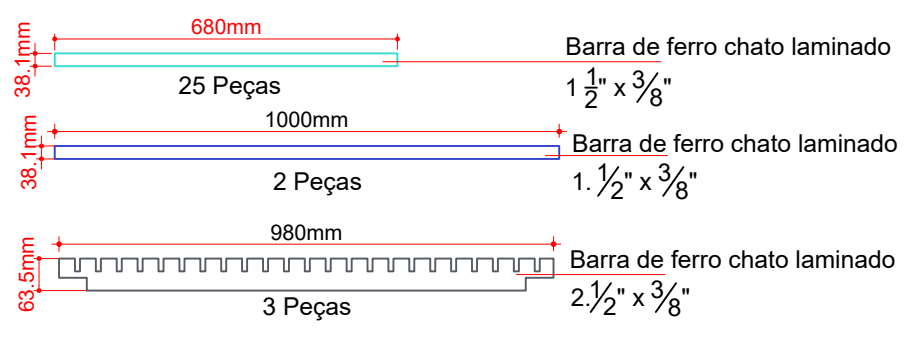
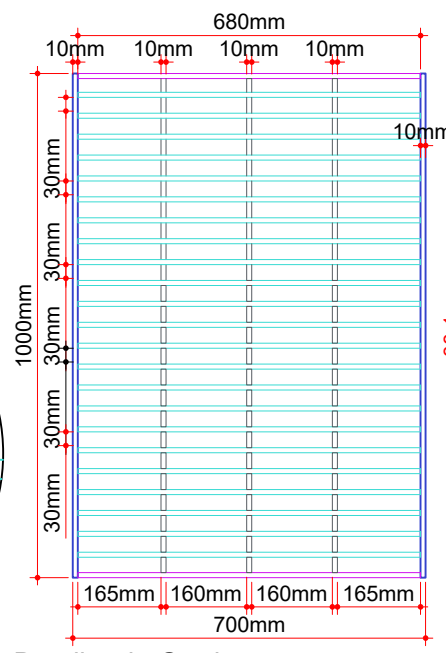
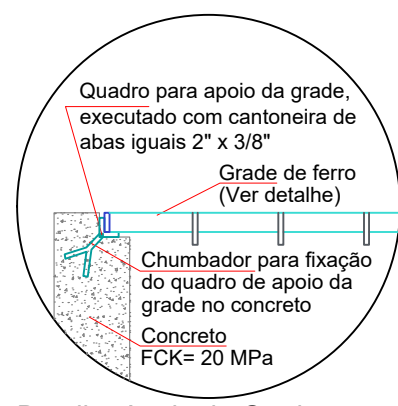
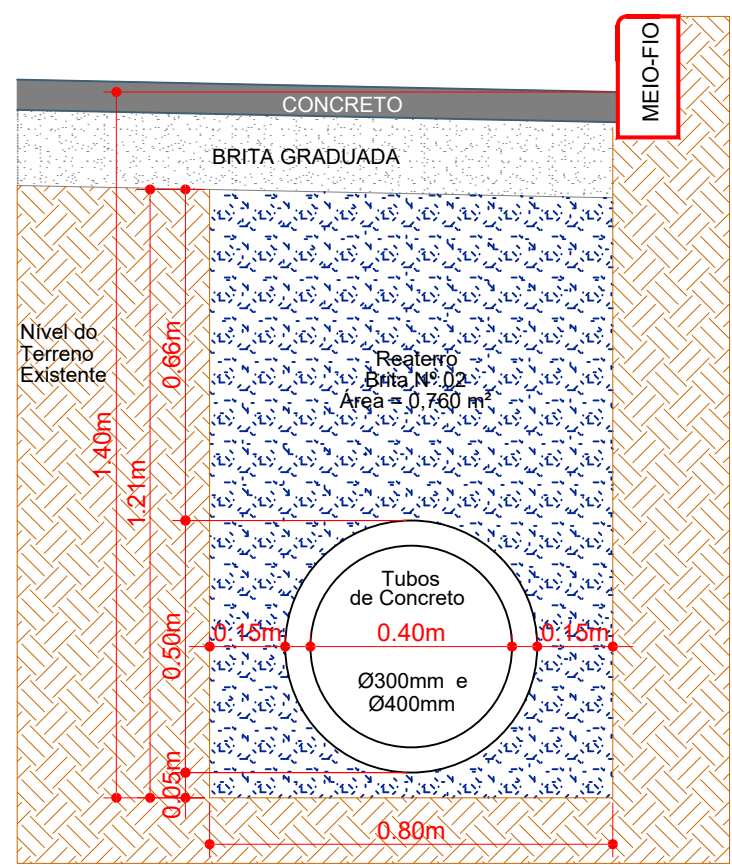
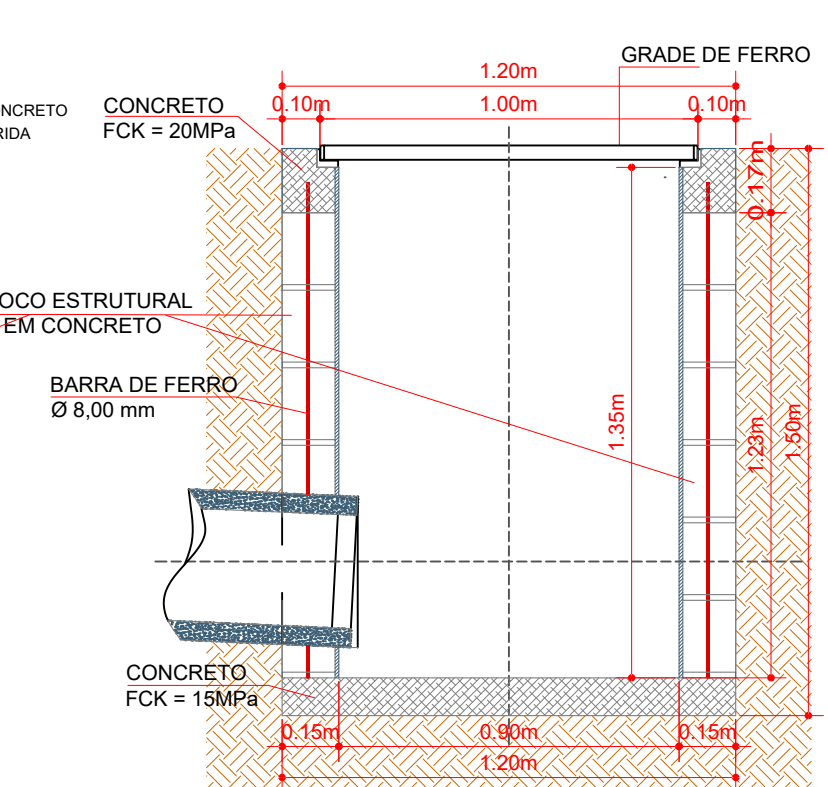
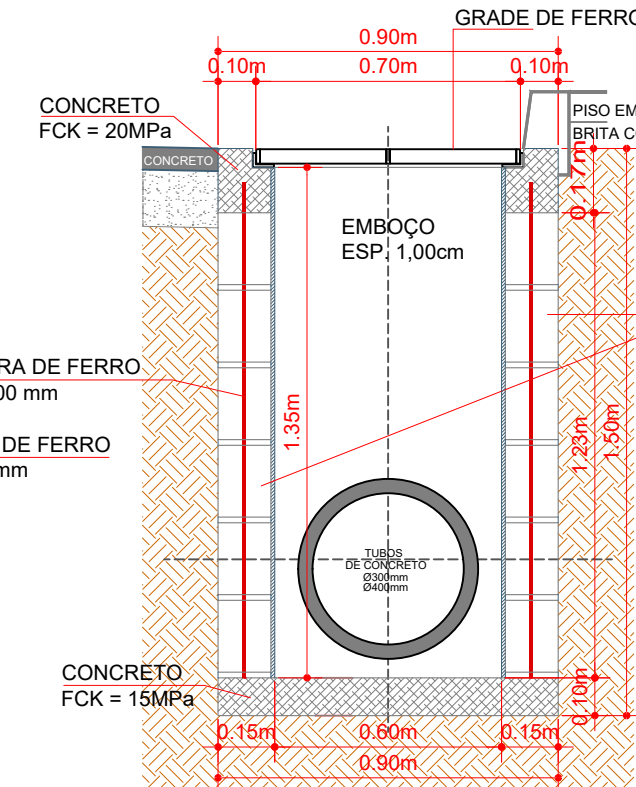
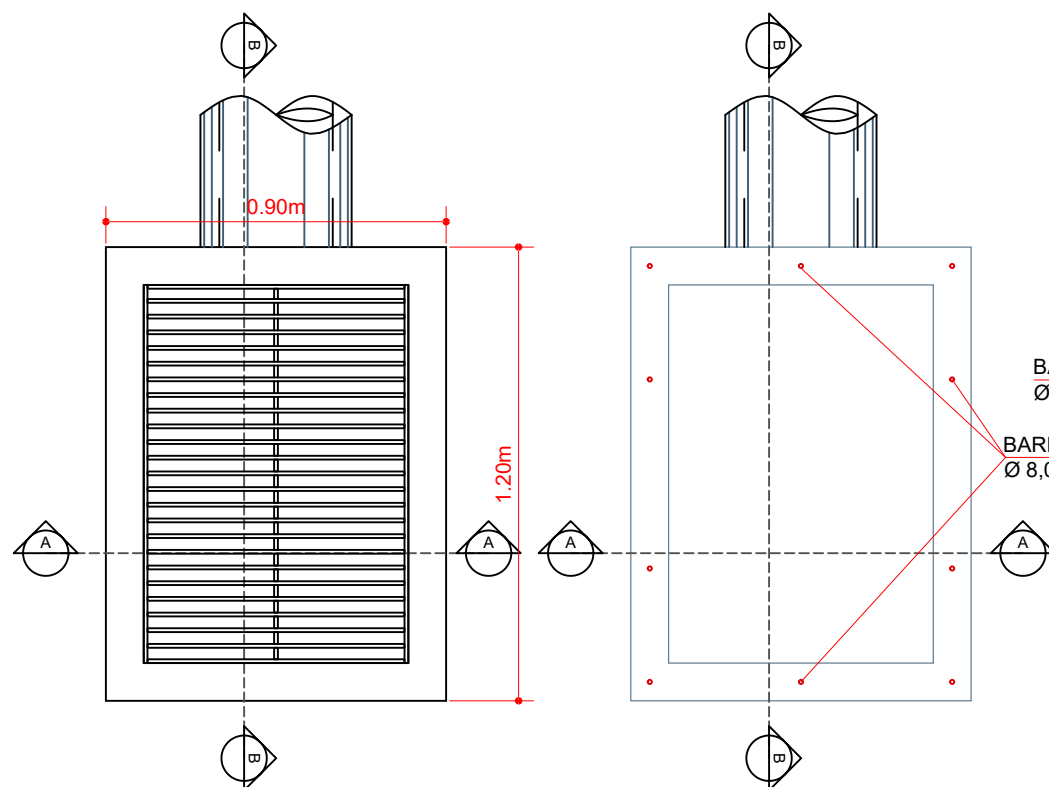


BOCA DE LOBO - TIPO I - Ø300mm/Ø400mm



Projeto: PAVIMENTAÇÃO EM CONCRETO DA RUA NEREU SUTIL - DISTRITO INDUSTRIAL - ERVAL VELHO - SANTA CATARINA

Responsável Técnico:
 Ana Júlia U. de Carvalho - Eng. Civil - CREA-SC 105.295-8
 Andre Brito Dotti - Eng. Civil - CREA-SC 162.237-5
 Denir Narcizo Zulian - Eng. Civil - CREA-SC 50.805-8
 Fábio Zilio Caron - Eng. Civil - CREA-SC 140.642-7
 Lucas F. Balestrin - Eng. Agrônomo - CREA-SC 156.743-7
 Max Mooshammer - Eng. Civil - CREA-SC 139.164-0
 Suellen Karine Cervelin - Eng. Civil - CREA-SC 166.933-0

DRENAGEM
DRE. 02/02

Assinatura Prefeito(a) Municipal _____ Assinatura Responsável Técnico _____
 Desenho: Edson Abatti Data: março de 2021 Revisão: outubro de 2021 Escala: Indicadas Trecho: O.P.P. ATÉ 4+18.76m