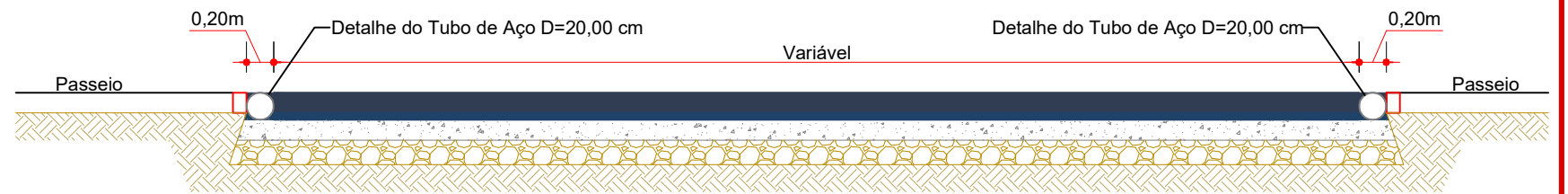
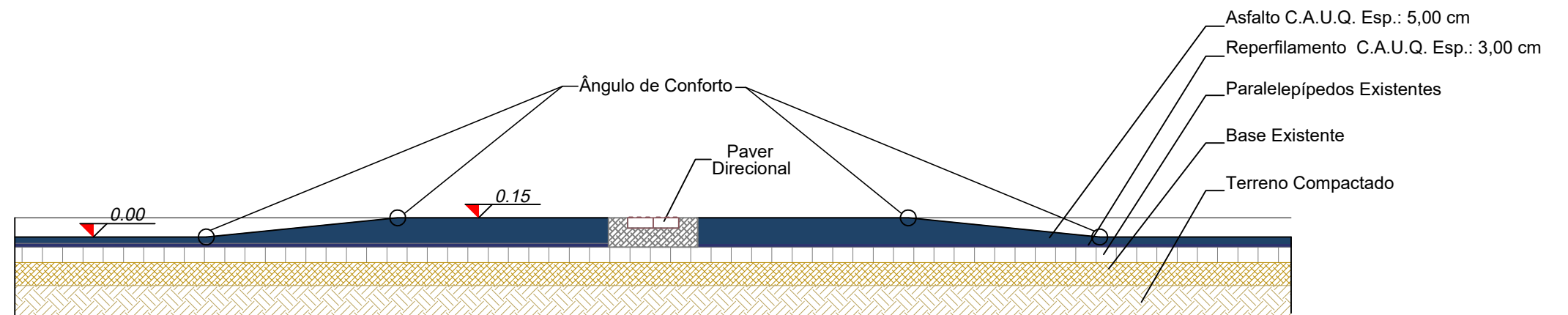
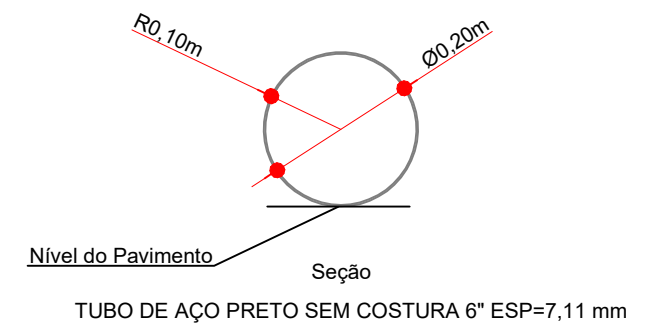
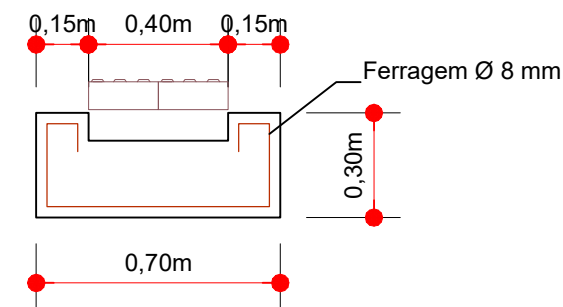


DETALHE DA FAIXA DE SEGURANÇA ELEVADA  
Escala 1/100



CORTE BB  
Faixa Elevada  
Escala: 1/50



Responsável Técnico

Assinatura Prefeito(a) Municipal

MUNICÍPIO DE ERVAL VELHO

Obra: PAVIMENTAÇÃO EM ASFALTO C.A.U.Q. DE PARTE DA RUA CEL. HONORATO VIEIRA

Projeto: DENIR NARCIZO ZULIAN - ENG. CIVIL - CREA/SC 50.805-8  
MICHEL ALBERTI - ENG. CIVIL - CREA/SC 80.032-6  
ANA JÚLIA UNGERICH - ENG. CIVIL - CREA/SC 105.295-8  
MAX MOOSHAMMER - ENG. CIVIL - CREA/SC 139.964-0

Desenho: FELIPE LORENCI PARISOTO

Data: JUNHO DE 2018

Escala: 1/500

Serviço: PROJETO GEOMÉTRICO

Trecho: Est. OPP - 8 + 8,145

Prancha:

GEO.  
03/03