



Rua Roberto Trompowski, 68 - 2º andar / Tel: 49 3522-2800 - www.ammoc.org.br - e-mail: ammoc@ammoc.org.br - Joaçaba/SC

## PREFEITURA DE ERVAL VELHO

### BARRAÇÃO PARA SECRETARIA DE AGRICULTURA

Obra:

Local da Obra:

**RUA CEL. HONORATO VIEIRA - PROX. COHAB**

Conteúdo:

**DETALHAMENTO DOS CÁLCES**

Responsável Técnico:

Ana Júlia U. de Carvalho - Eng. Civil - Crea/SC 105.295-8  
 André Brito Dotti - Eng. Civil - Crea/SC 162.237-5  
 Denir Narcizo Zulian - Eng. Civil - Crea/SC 50.805-8  
 Fábio Zilio Caron - Eng. Civil - Crea/SC 140.642-7  
 Lucas F. Balestrin - Eng. Agrônomo - Crea/SC 156.743-7  
 Max Mooshammer - Eng. Civil - Crea/SC 139.164-0  
 Suellen Karine Cervelin - Eng. Civil - Crea/SC 166.933-0

**EST  
02/11**

Quaisquer alterações consulte os responsáveis técnicos:

Assinatura Responsável Técnico

Assinatura Prefeito(a) Municipal

Desenho:

Fábio Z. Caron

Data:

Agosto / 2022

Escala:

Indicada (s)

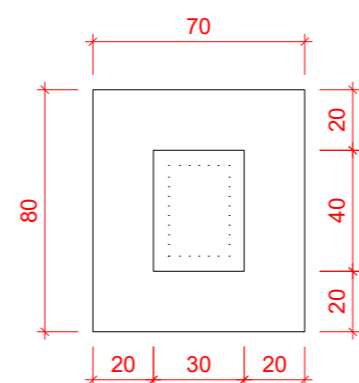
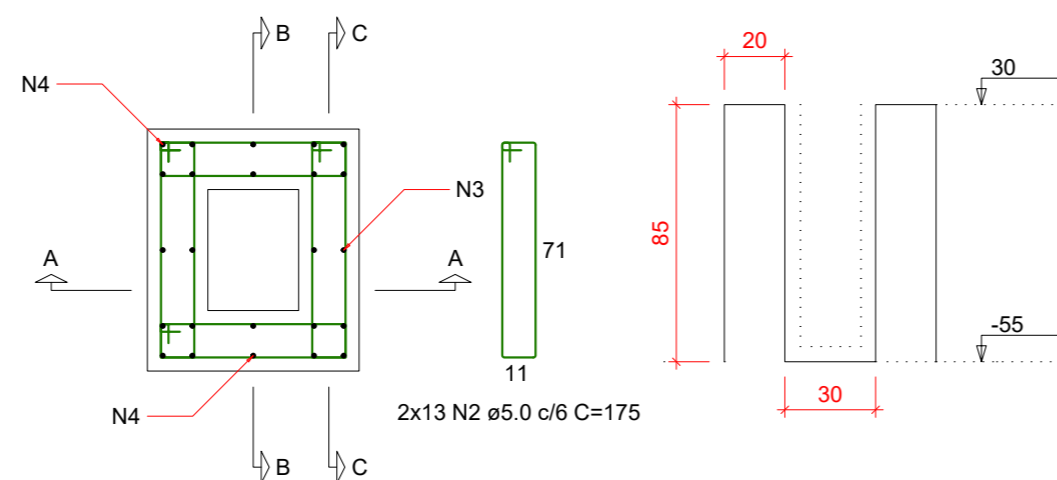
Área Total:

404,11 m²

Aprovações:

### Cálice (P1-P26)

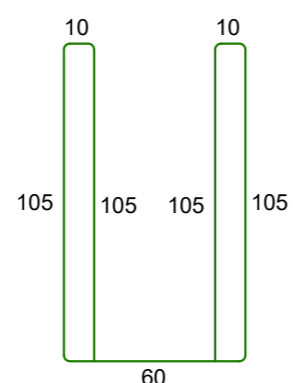
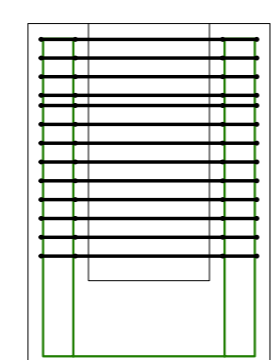
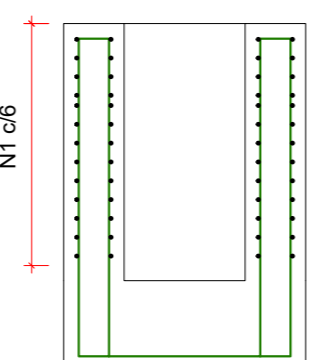
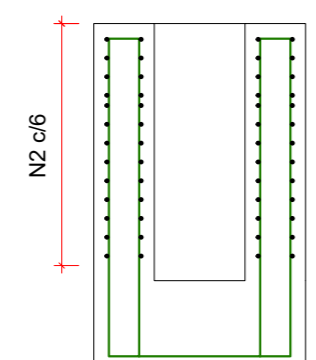
ESC 1:25



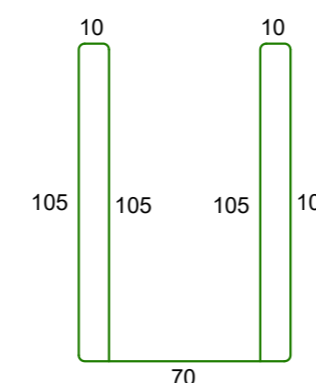
CORTE A-A

CORTE B-B

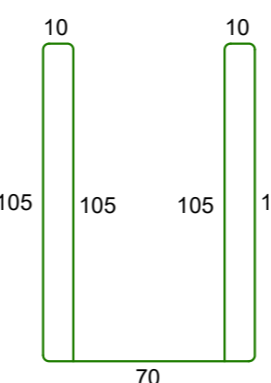
CORTE C-C



1 N3 ø8.0 c/20 C=489



1 N4 ø8.0 c/15 C=499



2x2 N4 ø8.0 C=499

### RELAÇÃO DO AÇO

26xCálice P1 26xS1

AÇO	N	DIAM (mm)	QUANT	C.UNIT (cm)	C.TOTAL (cm)
CA60	1	5.0	676	155	104780
	2	5.0	676	175	118300
CA50	3	8.0	26	489	12714
	4	8.0	130	499	64870
	5	8.0	364	159	57876
	6	8.0	338	169	57122

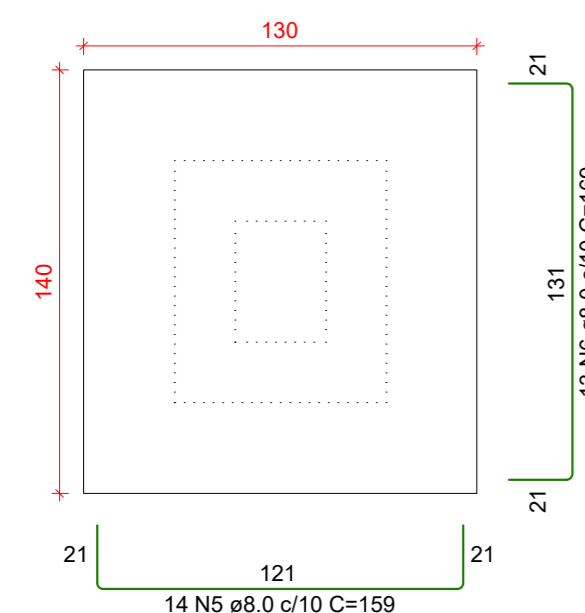
### RESUMO DO AÇO

AÇO	DIAM (mm)	C.TOTAL (m)	PESO (kg)
CA50	8.0	1925.8	759.9
CA60	5.0	2230.8	343.8

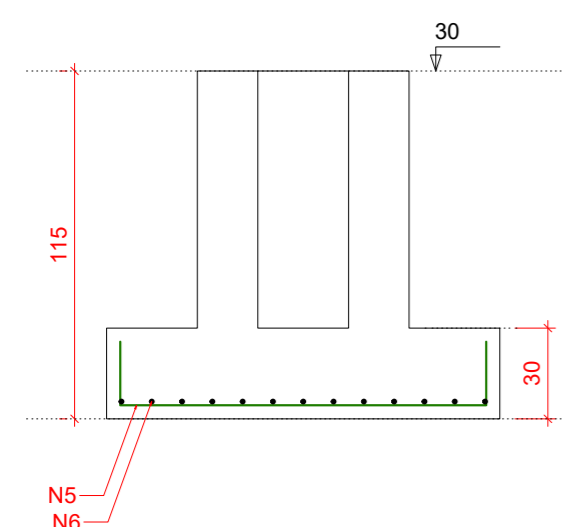
PESO TOTAL (kg)	
CA50	759.9
CA60	343.8

Volume de concreto (C-25) = 23.92 m³  
 Área de forma = 157.04 m²

### S1-S26 PLANTA ESC 1:25



### CORTE ESC 1:25



**ESTRUTURAL**