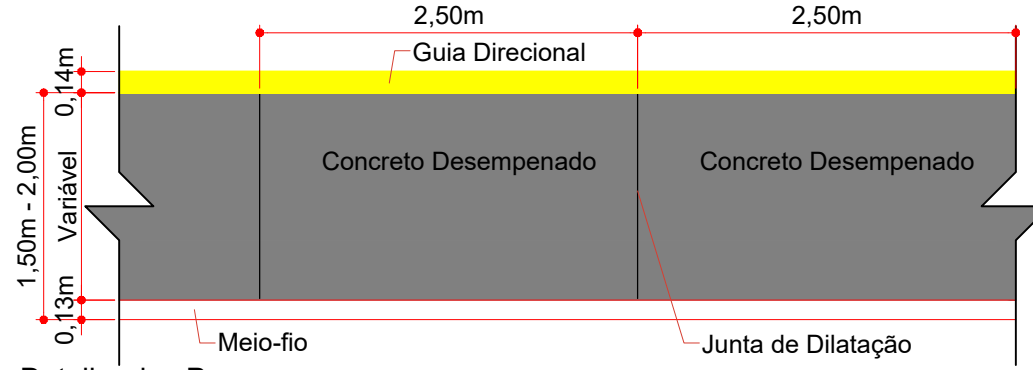
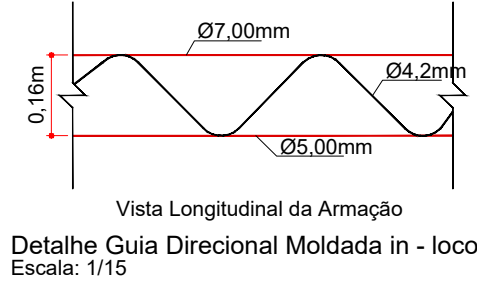
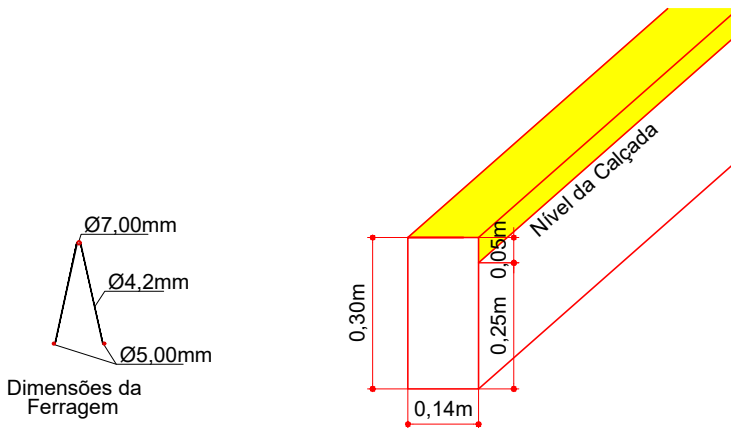
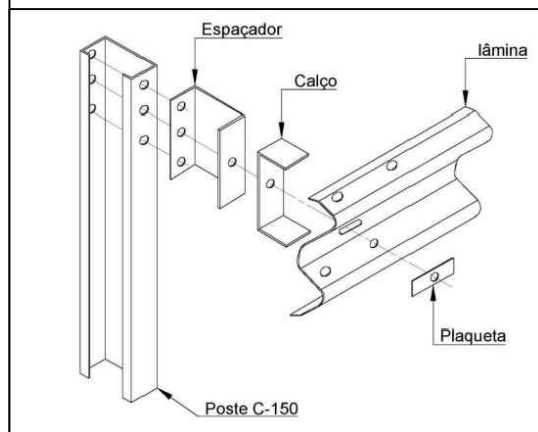
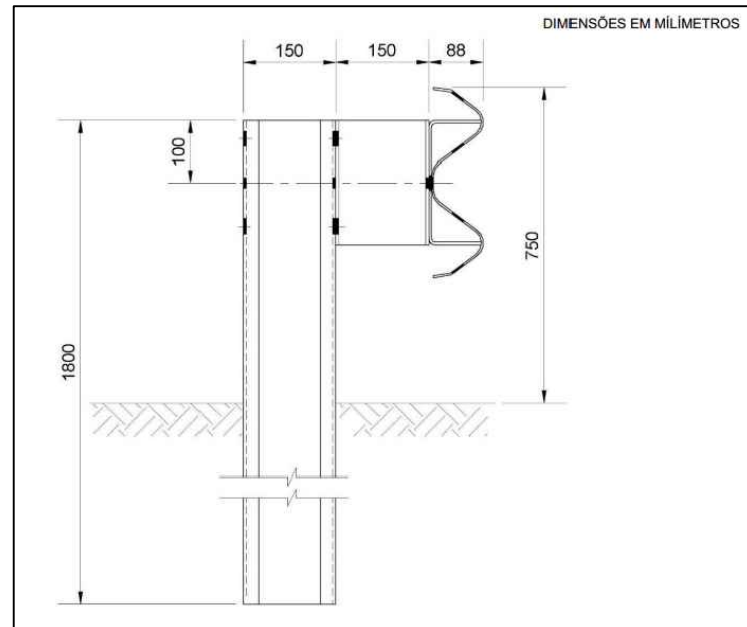
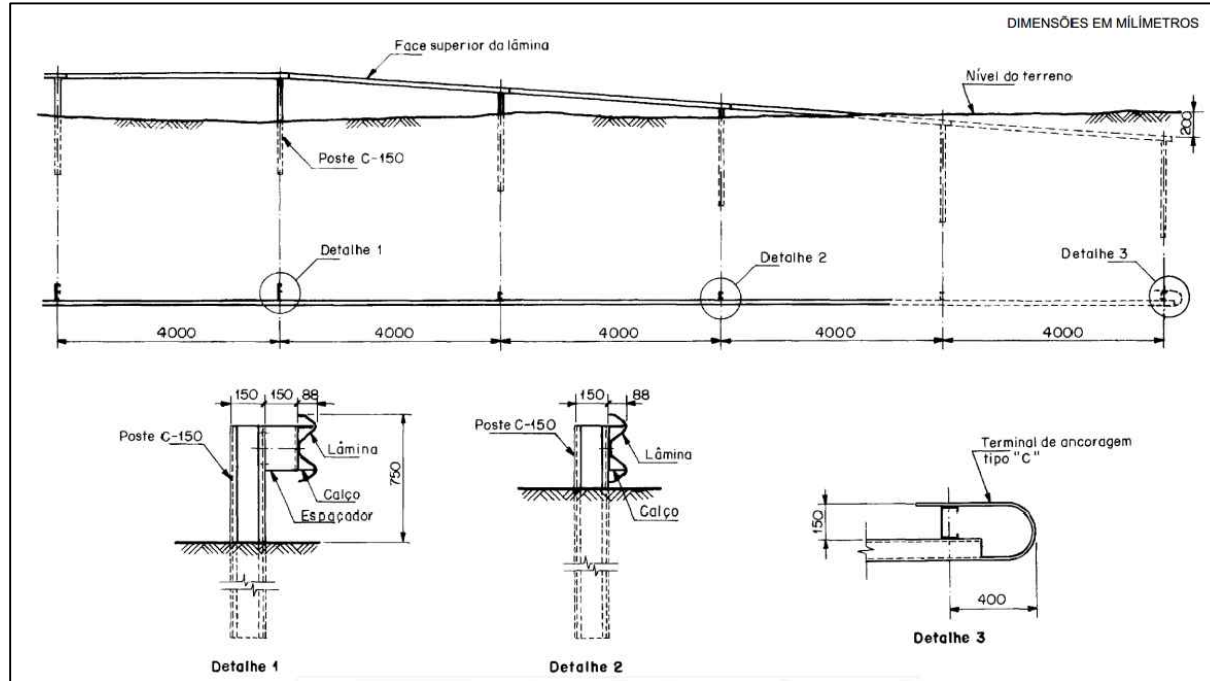


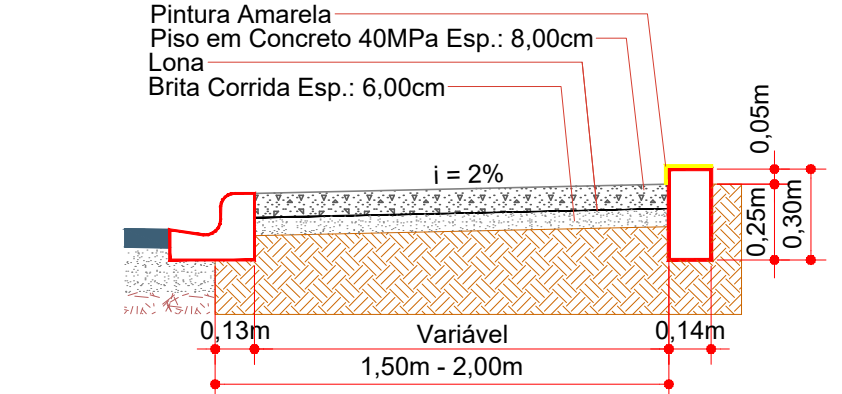
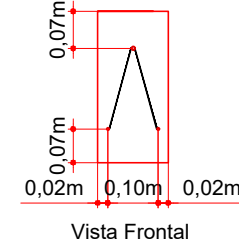
Detalhe Rebaixamento de Calçadas em Concreto Armado - Esp.: 12,00cm
Escala: 1/50



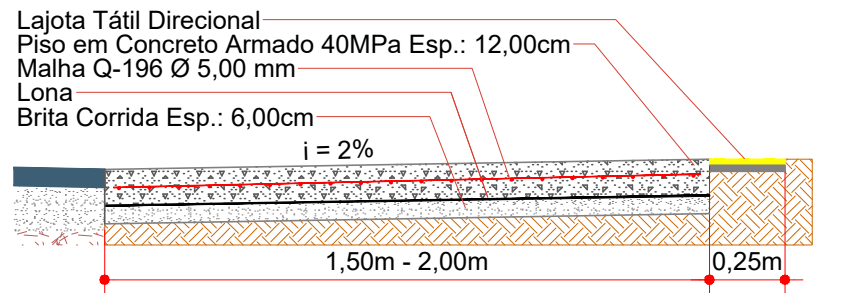
Detalhe dos Panos
Escala: 1/50



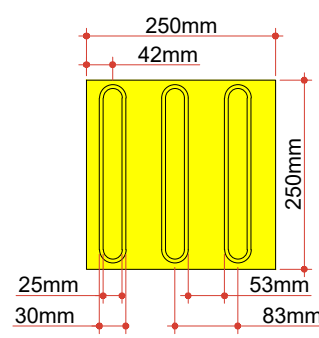
Detalhe Guia Direcional Moldada in - loco
Escala: 1/15



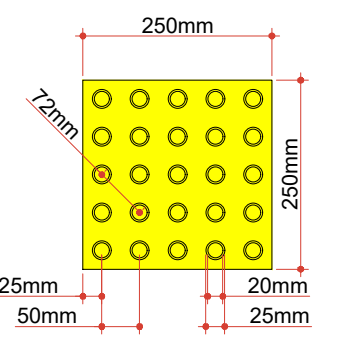
Seção da Calçada com Guia Direcional
Escala: 1/25



Seção da Calçada com Rebaixamento
Escala: 1/25



Modulação do Piso
Detalhe da Lajota de Sinalização
Tátil Direcional (25x25cm)
Escala: 1/10



Modulação do Piso
Detalhe da Lajota de Sinalização
Tátil Alerta (25x25cm)
Escala: 1/10



Projeto: Pavimentação em asfalto C.A.U.Q. de parte da Rua Elias Abraão Giacomini - Erval Velho/SC

Responsável Técnico:
Ana Júlia U. de Carvalho - Eng. Civil - CREA-SC 105.295-8
André Brito Dotti - Eng. Civil - CREA-SC 162.237-5
André Felipe Kasteller - Eng. Civil - CREA-SC 201.019-5
Denir Narcizo Zulian - Eng. Civil - CREA-SC 50.805-8
Felipe L. Parisoto - Eng. Agrônomo - CREA-SC 183.059-9
Lucas F. Balestrin - Eng. Agrônomo - CREA-SC 156.743-7
Max Mooshammer - Eng. Civil - CREA-SC 139.164-0
Suellen Karine Cervelin - Eng. Civil - CREA-SC 166.933-0

Assinatura Prefeito(a) Municipal Assinatura Responsável Técnico
Desenho: Felipe Lorenci Parisoto Data: agosto de 2023 Revisão: -- Escala: Indicadas Trecho: 0+0,000 - 10+7,210

GEO.
04/04